



# **PEERLESS GOLD-SILVER PROJECT**

GOLD BRIDGE MINING CAMP

CENTRAL BRITISH COLUMBIA

## **Re-emerging Historic Gold Mining Camp**



# PEERLESS GOLD-SILVER PROJECT

## **SUMMARY**

- Located in historic Gold Camp that produced over 4 million ounces of gold
- Peerless is in similar geological and structural terrain as adjacent historic gold mines
- Large land package, year-round access
- Previous drilling intercepted high-grade gold that remains open in all directions
- Gold mineralization with associated silver along ultramafic/metasedimentary contact
- Base metal mineralization also present
- Two distinct gold-silver ratios suggest structural intersections control mineralization
- Ready for drill testing. Planned late summer-fall drilling campaign



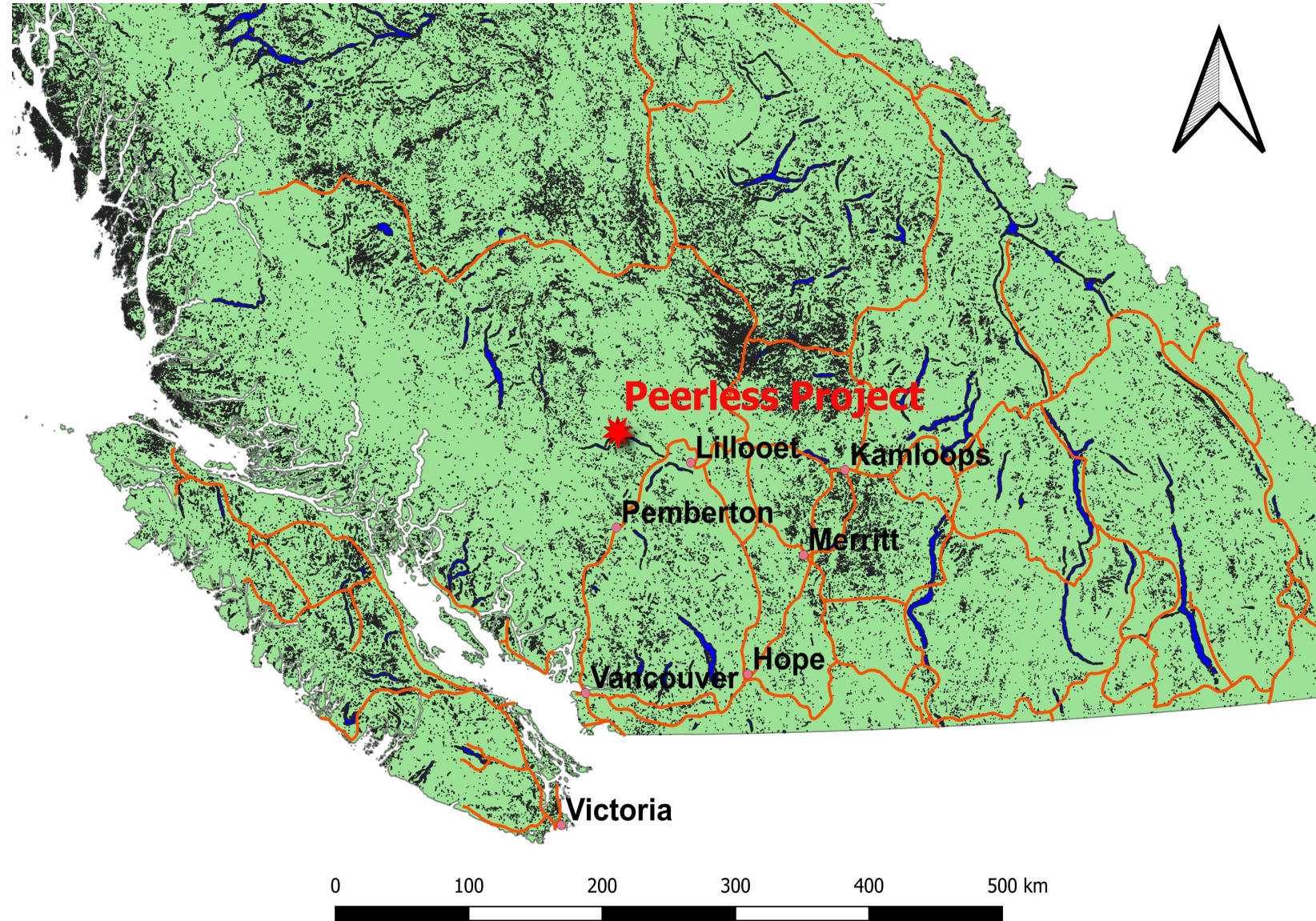
Located in south-central British Columbia

Approximately 8.7 kilometres north-east from Gold Bridge, B.C.

Accessible year round

Moderate topography with road access to most areas of the property.

## LOCATION MAP





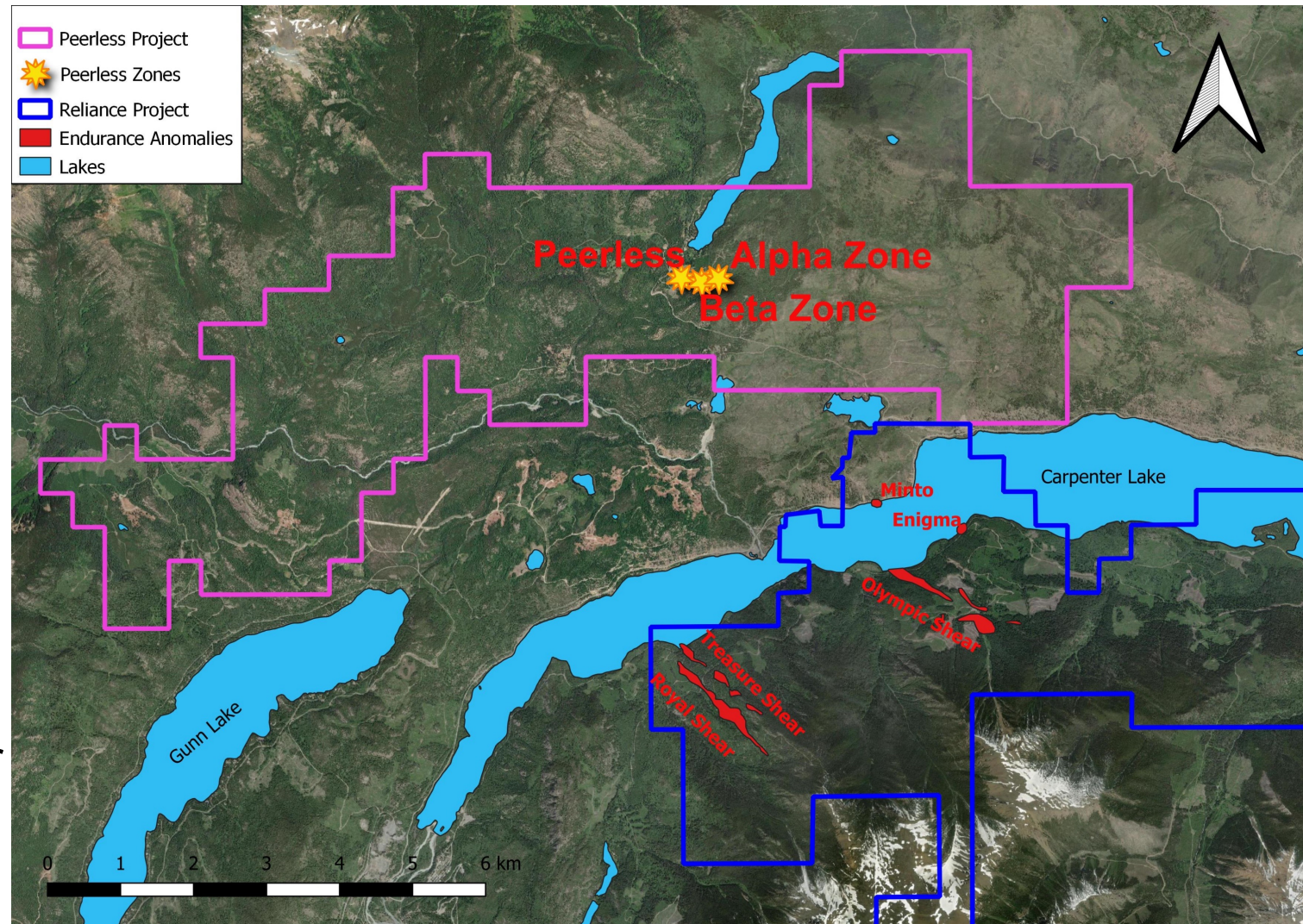


The Peerless Project is a large property consisting of eleven contiguous claims totaling 4482Ha

Recent drilling success by several companies in the area indicates the excellent potential the historic gold camp still holds such as:

Endurance Gold Corp. Jan 12, 2023, news release from the Treasure Shear - Eagle Zone returning 3.05 g/t gold over 139.9 m including 12.85 g/t gold over 12.9 m and 6.21 g/t gold over 11.8 m core lengths

## PEERLESS PROPERTY – CLAIM BLOCK

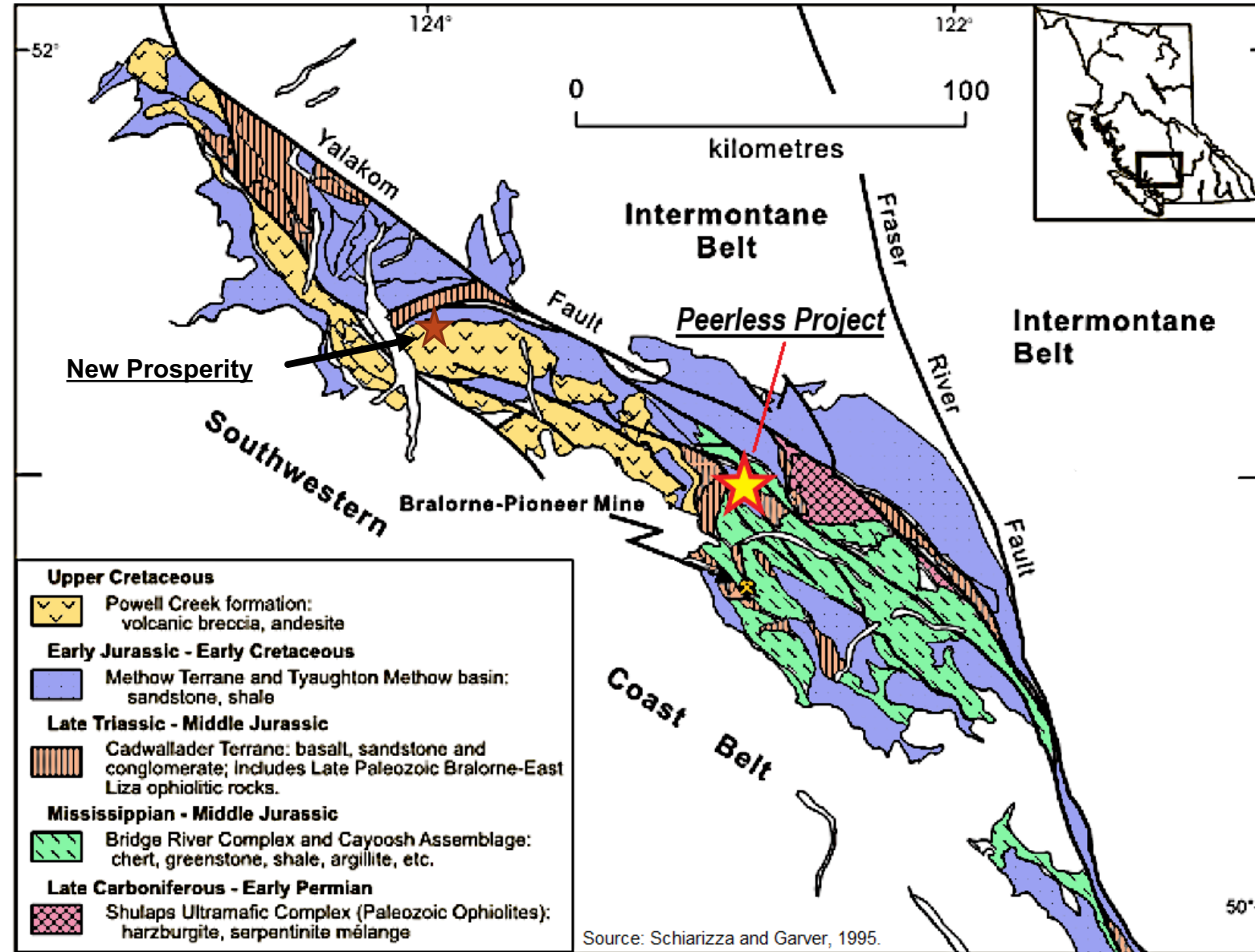




Peerless Project located in the same regional geological setting as the Bralorne and Pioneer Mines

Region also contains porphyry deposits including the New Prosperity; a gold-copper porphyry with a one billion tonne measured and indicated resource containing 5.3 billion pounds of copper and 13.3 million ounces of gold

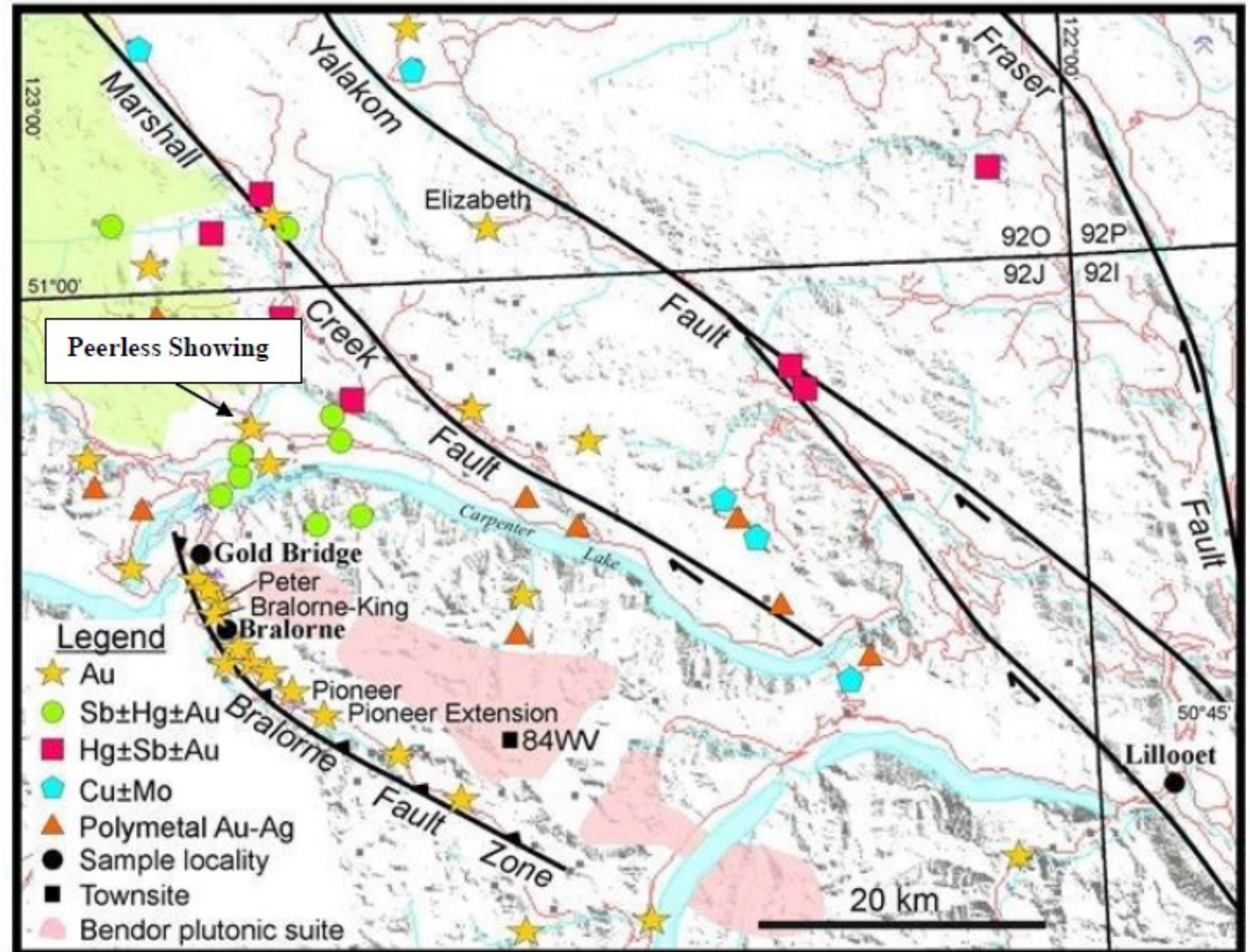
## REGIONAL GEOLOGY MAP



## MINERAL OCCURENCES

Majority of gold mining and mineralization associated with altered ultramafics along thrust faults

Peerless also contains highly altered, structurally controlled, ultramafic intrusives





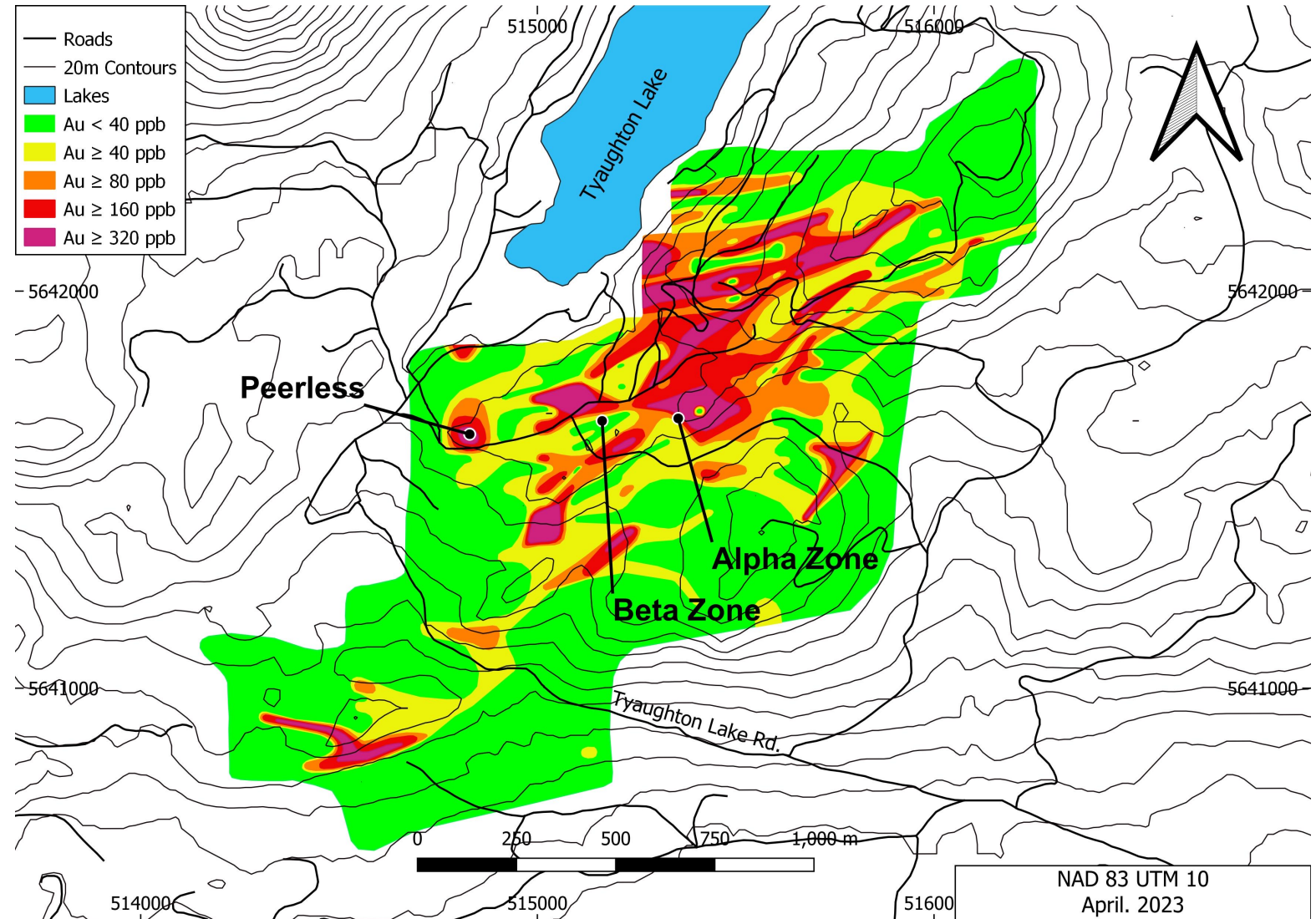
## SOIL GEOCHEMISTRY - GOLD

Anomalous gold-in-soil over 1.5 kilometers by 600 meters

Remains open in most directions

Coincident multi-element anomalies including; silver-lead-zinc-copper-antimony-bismuth-arsenic

Anomalous soil geochemistry appears to follow ultramafic intrusive trend





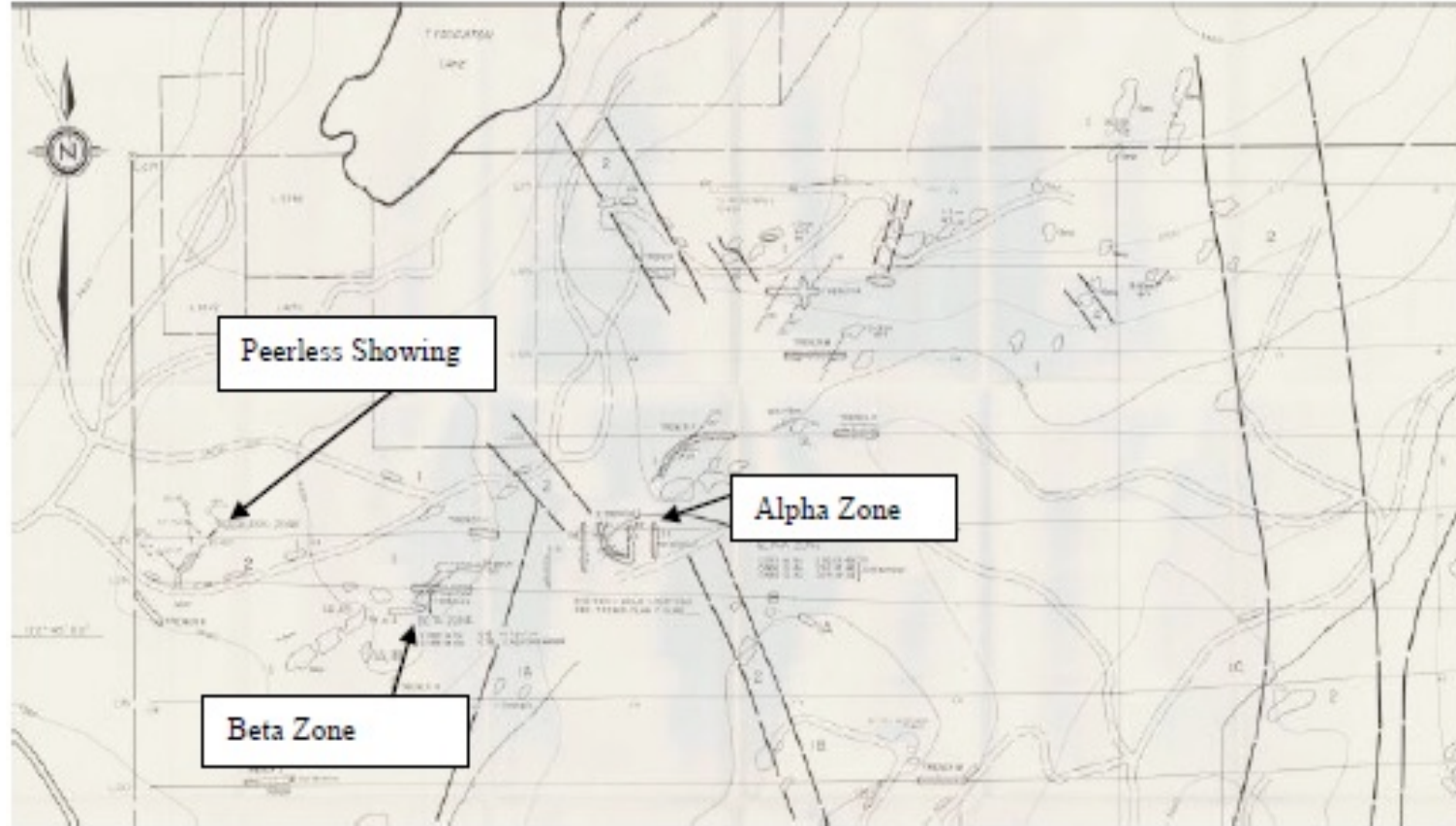
## LOCATION OF KNOWN MINERALIZATION

Three known Gold occurrences on the property

Peerless Showing - underground in 1930's Silver/Lead/Zinc

Alpha Zone – trenching/drilling 1980's gold mineralization with some drilling reporting lead/zinc/silver associated mineralization

Beta Zone – Blind, high-grade gold mineralization discovered in 1980's drilling. Values of 1.02 oz/tonne over 15 ft including 1.87 oz/tonne gold over 5.0 ft (reported drill lengths)

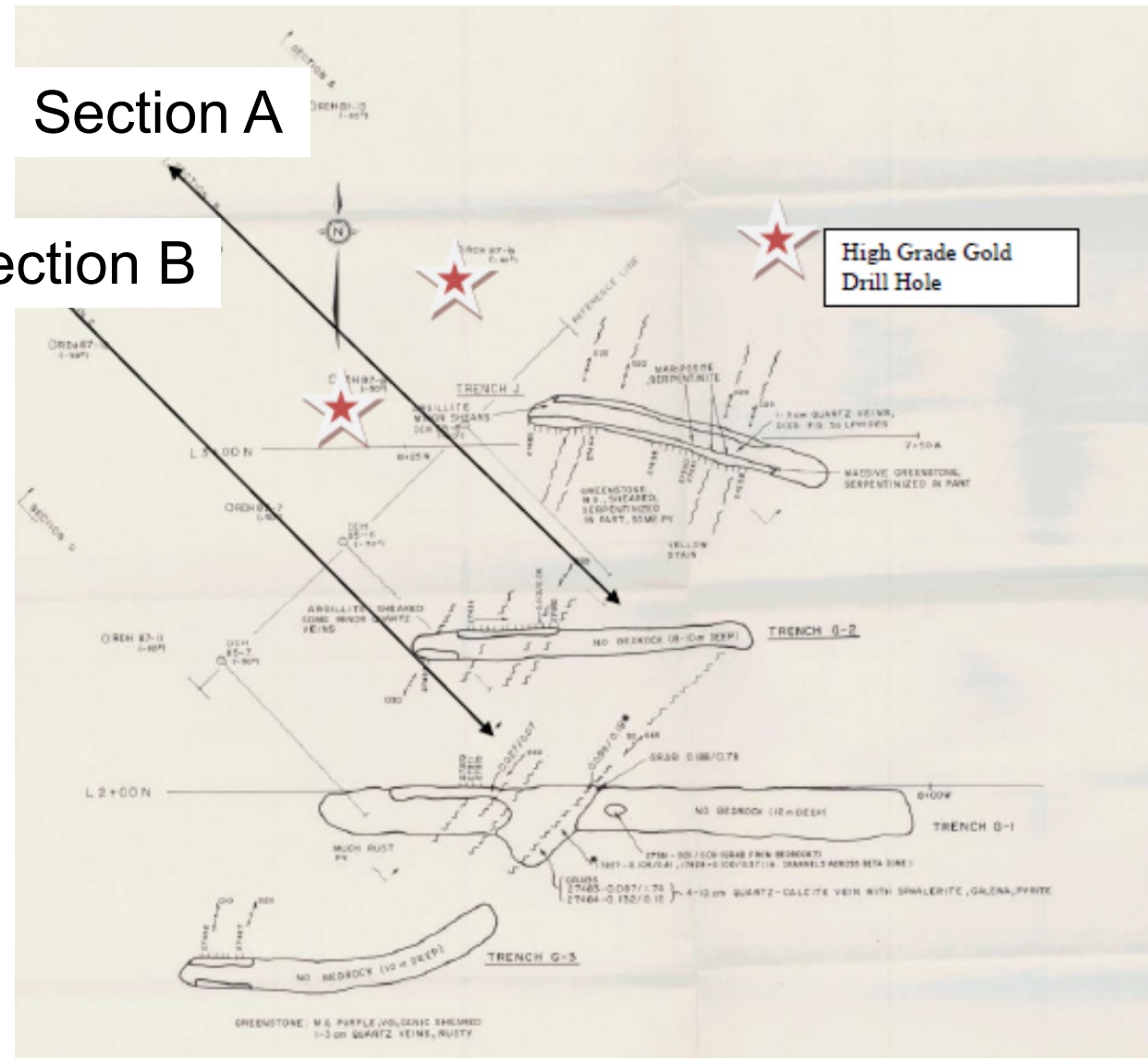






## Section B

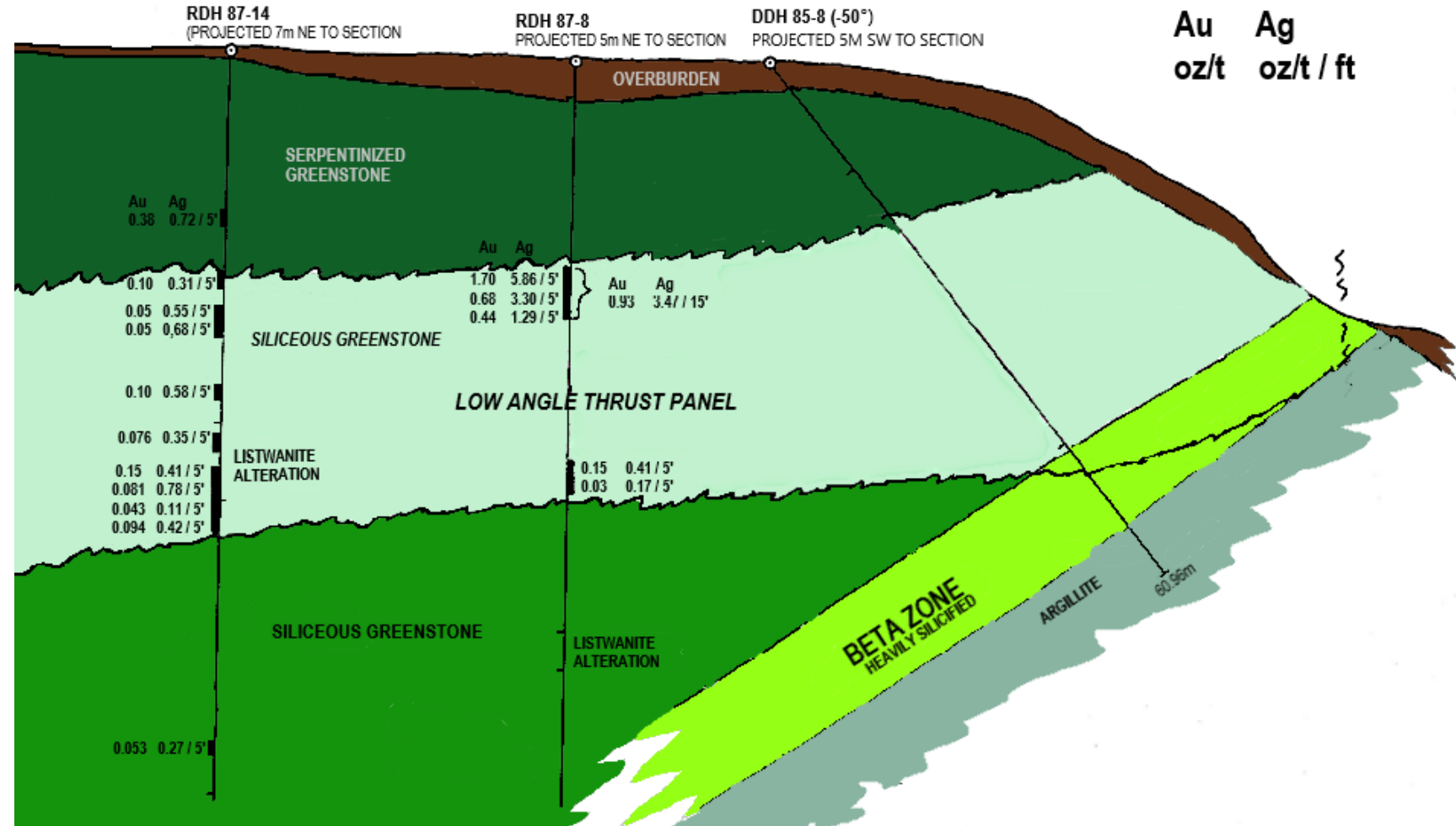
## Drill holes along ultramafic contact have high-grade gold values



# CROSS SECTION OF 1987 DRILL HOLES WITH ASSAY RESULTS

## SECTION A

Cross Section showing potential low angle thrust panel occurring based on drill hole drill logs







Drill Program completed in 1987 with no further drilling or systematic exploration completed on the property

Two distinct gold-silver ratios. Lower ratio implies proximity to source

## HISTORIC DRILLING RESULTS

HOLE	From ft	to ft	Silver oz/ton*	Gold oz/ton*
87 - 7	135	140	0.75	0.09
87 - 8	65	70	5.86	1.70
	70	75	3.28	0.68
	75	80	1.29	0.44
	<b>65</b>	<b>80</b>	<b>3.47</b>	<b>0.93</b>
	125	130	0.41	0.15
	130	135	0.17	0.03
87 - 9	165	170	0.11	0.28
	170	175	0.36	1.13
	<b>165</b>	<b>175</b>	<b>0.24</b>	<b>0.69</b>
87 - 12	105	110	0.32	0.12
	115	120	0.75	0.22
	135	140	1.85	0.11
	140	145	3.84	0.30
	145	150	1.86	0.12
	150	155	0.88	0.11
	<b>135</b>	<b>155</b>	<b>2.10</b>	<b>0.15</b>
*ton = 2000 lbs				
10:1 Silver to Gold Ratio				
3:1 Silver to Gold Ratio				



Bathurst Metals has the exploration expertise to drive the project ahead and book resources

## **REASONS TO INVEST**

Compelling geological setting

First Nations support for development

Experienced technical team

Camp set up on location

Infrastructure nearby

Drill ready project





## **PROPOSED WORK PROGRAMS FOR 2023**

May-June

Additional soil sampling along open trends to expand on soil sampling programs from 2018-2020. Ground magnetic survey over area of gold in soil anomalies

September-October

Drill testing the Alpha and Beta Zones in areas of known high-grade gold mineralization. Approximately 2000m of reverse circulation or diamond drilling planned



## Corporate Office

**Bathurst Metals Corp.**  
700 - 1199 West Hastings Street  
Vancouver BC V6E 2T5  
CANADA

Tel: +1 (604) 783-4273  
[info@bathurstmetalscorp.com](mailto:info@bathurstmetalscorp.com)